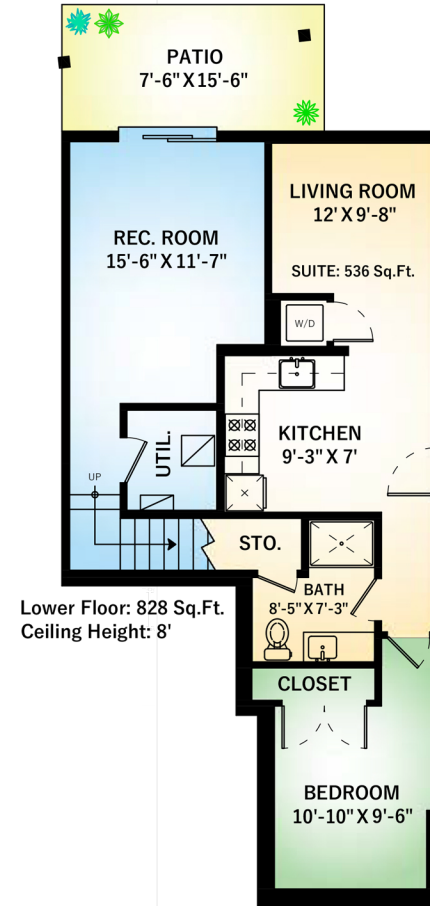
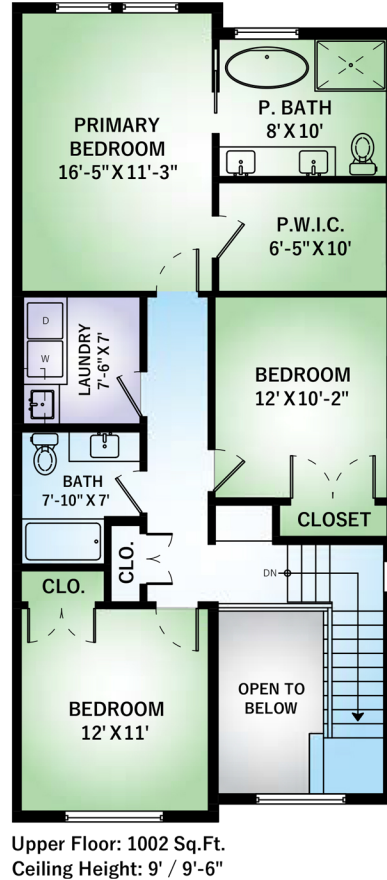
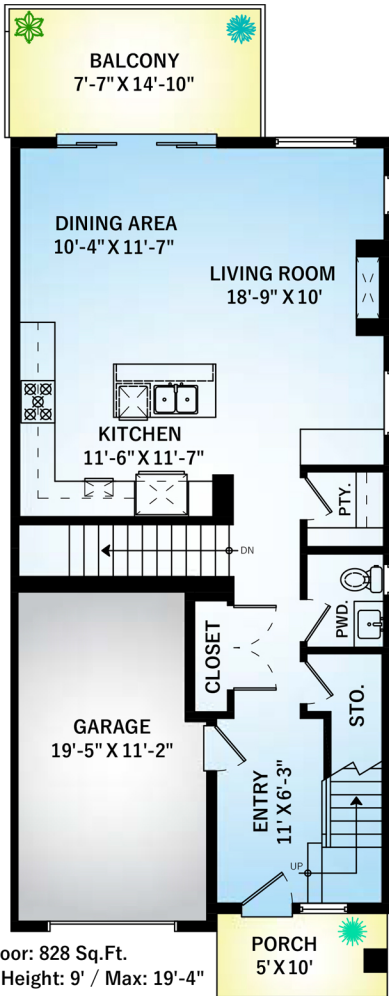


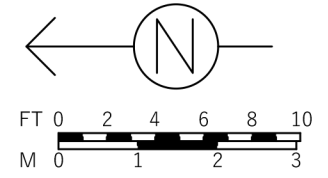
1548 MARBLE PL

LANGFORD, BC



Main Floor	828 SQ.FT.
Upper Floor	1002 SQ.FT.
Lower Floor	828 SQ.FT.
Total	2658 SQ.FT.
Patio	116 SQ.FT.
Porch	50 SQ.FT.
Balcony	121 SQ.FT.
Garage	223 SQ.FT.
Total Extras	510 SQ.FT.

Open To Below 68 SQ.FT.



Main
Cellar

